

See discussions, stats, and author profiles for this publication at: <https://www.researchgate.net/publication/340526613>

# A mountable toilet system for personalized health monitoring via the analysis of excreta

Article in *Nature Biomedical Engineering* · April 2020

DOI: 10.1038/s41551-020-0534-9

CITATIONS

2

READS

1,575

23 authors, including:



**Seung-min Park**  
Stanford Medicine

41 PUBLICATIONS 628 CITATIONS

[SEE PROFILE](#)



**Jung Ho Yu**  
Stanford University

38 PUBLICATIONS 5,357 CITATIONS

[SEE PROFILE](#)



**Amin Aalipour**  
Stanford University

26 PUBLICATIONS 497 CITATIONS

[SEE PROFILE](#)



**Susie Suh**  
Case Western Reserve University

19 PUBLICATIONS 123 CITATIONS

[SEE PROFILE](#)

Some of the authors of this publication are also working on these related projects:



Precision Health Toilet [View project](#)



Noninvasive in vivo multiplexed imaging [View project](#)



# A mountable toilet system for personalized health monitoring via the analysis of excreta

Seung-min Park<sup>1,2,17</sup>, Daeyoun D. Won<sup>1,3,4,17</sup>, Brian J. Lee<sup>1,2,17</sup>, Diego Escobedo<sup>1</sup>, Andre Esteva<sup>5</sup>, Amin Aalipour<sup>1,2</sup>, T. Jessie Ge<sup>6</sup>, Jung Ha Kim<sup>3</sup>, Susie Suh<sup>7</sup>, Elliot H. Choi<sup>7</sup>, Alexander X. Lozano<sup>8,9</sup>, Chengyang Yao<sup>10</sup>, Sunil Bodapati<sup>11</sup>, Friso B. Achterberg<sup>1,2,12</sup>, Jeesu Kim<sup>1,2,13</sup>, Hwan Park<sup>14</sup>, Youngjae Choi<sup>14</sup>, Woo Jin Kim<sup>14</sup>, Jung Ho Yu<sup>1,2</sup>, Alexander M. Bhatt<sup>1</sup>, Jong Kyun Lee<sup>3,4</sup>, Ryan Spitler<sup>1,15</sup>, Shan X. Wang<sup>8,10,16</sup> and Sanjiv S. Gambhir<sup>1,2,8,11,15,16</sup> ✉

**Technologies for the longitudinal monitoring of a person's health are poorly integrated with clinical workflows, and have rarely produced actionable biometric data for healthcare providers. Here, we describe easily deployable hardware and software for the long-term analysis of a user's excreta through data collection and models of human health. The 'smart' toilet, which is self-contained and operates autonomously by leveraging pressure and motion sensors, analyses the user's urine using a standard-of-care colorimetric assay that traces red-green-blue values from images of urinalysis strips, calculates the flow rate and volume of urine using computer vision as a uroflowmeter, and classifies stool according to the Bristol stool form scale using deep learning, with performance that is comparable to the performance of trained medical personnel. Each user of the toilet is identified through their fingerprint and the distinctive features of their anoderm, and the data are securely stored and analysed in an encrypted cloud server. The toilet may find uses in the screening, diagnosis and longitudinal monitoring of specific patient populations.**

The US Precision Medicine Initiative defines precision medicine as “an emerging approach for disease treatment and prevention taking into account individual variability in genes, environment, and life style for each person”<sup>1–4</sup>. Clinicians today can conduct panoramic molecular analyses to characterize many diseases, but current precision medicine is still primarily limited to disease treatment rather than prevention and early detection. The current manifestations of precision medicine address disease retrospectively after many symptoms have already appeared. Although clinicians are able to tailor therapies to address the disease process of each patient, they are at a considerable disadvantage owing to possible delayed treatment. Thus, equal emphasis should be given to disease prevention and early detection as well as disease treatment.

Instead of precision medicine, the rapidly evolving field of precision health has expanded efforts in the prevention and early detection of disease through risk-tailored longitudinal monitoring<sup>5</sup>. A similar idea is already realized in the aircraft industry, which implements continuous monitoring of jet engines with hundreds of sensors to prevent engine failure. Unfortunately, in contrast to the aircraft industry, the fact that a normal adult in the United States visits a healthcare provider fewer than four times per year<sup>6</sup> implies that surveillance of the human body is limited, infrequent and possibly

insufficient. Implementing precision health strategies is therefore believed to make a considerable difference to both the habits and the health of a person over a long period of time. In this regard, we previously proposed a framework for precision health<sup>5</sup>, suggesting the importance of ‘passive monitoring and the smart home’ and ‘delivering information and guidance through the health portal’.

Invasive clinical procedures are not suitable for continuous health monitoring in a non-clinical environment, as they are often distressing, costly and burdensome for the public. Even a minimally invasive blood draw, despite its great potential in diagnostics<sup>7,8</sup>, is burdensome when it comes to the healthy population. Thus, the ideal sources of diagnostic information for continuous health monitoring are the potentially information-rich molecular contents of breath<sup>9,10</sup>, sweat<sup>11,12</sup>, saliva<sup>13,14</sup>, urine and stool<sup>15–20</sup>, all of which are complex by-products that are affected by human body systems, activities and external environments that provide valuable information on an individual's health and are naturally excreted every day. Routine medical tests for these excreta include urinalysis, uroflowmetry and stool analysis, such as microscopic examination, chemical tests and microbiological tests. Urinalysis is important for accessing the biochemical constituents of the urine and its relationship with various disease states, such as diabetes, metabolic

<sup>1</sup>Department of Radiology, Stanford University School of Medicine, Stanford, CA, USA. <sup>2</sup>Molecular Imaging Program at Stanford, Stanford University School of Medicine, Stanford, CA, USA. <sup>3</sup>Department of Surgery, Seoul Song Do Hospital, Seoul, Republic of Korea. <sup>4</sup>Cancer Immunology Laboratory, Seoul, Seoul Song Do Hospital, Republic of Korea. <sup>5</sup>Salesforce Research, Palo Alto, CA, USA. <sup>6</sup>Department of Urology, Stanford University School of Medicine, Stanford, CA, USA. <sup>7</sup>Department of Pharmacology, Case Western Reserve University School of Medicine, Cleveland, OH, USA. <sup>8</sup>Department of Materials Science and Engineering, Stanford University, Stanford, CA, USA. <sup>9</sup>Faculty of Medicine, University of Toronto, Toronto, Ontario, Canada. <sup>10</sup>Department of Electrical Engineering, Stanford University, Stanford, CA, USA. <sup>11</sup>Department of Bioengineering, Stanford University, Stanford, CA, USA. <sup>12</sup>Department of Surgery, Leiden University Medical Center, Leiden, the Netherlands. <sup>13</sup>Department of Creative IT Engineering, Pohang University of Science and Technology (POSTECH), Pohang, Republic of Korea. <sup>14</sup>College of Medicine, The Catholic University of Korea, Seoul, Republic of Korea. <sup>15</sup>Precision Health and Integrated Diagnostic Center (PHIND), Stanford University School of Medicine, Palo Alto, CA, USA. <sup>16</sup>Canary Center at Stanford for Cancer Early Detection, Stanford University School of Medicine, Palo Alto, CA, USA. <sup>17</sup>These authors contributed equally: Seung-min Park, Daeyoun D. Won, Brian J. Lee.

✉e-mail: [sgambhir@stanford.edu](mailto:sgambhir@stanford.edu)

abnormalities, liver diseases, some cancers (such as prostate, kidney and bladder), biliary and hepatic obstructions, and diseases of the kidneys and urinary tract<sup>21,22</sup>. These tests are already offered for in-home use and are commercially available on the market in the form of test strips. In addition to the biochemical analysis of urine, the standard technique for the physical and quantitative analysis of urination is known as uroflowmetry, which measures the flow of urine and tracks the velocity, volume and the duration of urination events<sup>23–26</sup>. Uroflowmetry is used as a diagnostic test to assess the function of the urinary tract. Stool analysis is also important for diagnosing gastrointestinal disorders, including poor nutrient absorption<sup>27</sup>, pancreatitis<sup>28–33</sup>, infections<sup>34–36</sup> and cancers<sup>17,37,38</sup>. In particular, the Bristol stool form scale (BSFS; BS1–BS7) categorizes the form of stool to be used as an assessment tool for the diagnosis of various bowel diseases or evaluation of treatment efficacy (Supplementary Table 1). The use of an objective scale facilitates accurate communication of clinically useful information between patients and physicians<sup>39,40</sup>. Unfortunately, despite its demonstrated clinical use, there are no clinically approved modalities that can reliably and consistently monitor human excreta in the home setting. Even these objective scales are subject to variations in interpretation by the patient. It has been reported that there are a certain level of disparities between the descriptions of stool by patients and true stool classification<sup>41</sup>. Furthermore, BSFS results assessed by physicians were reported to be substantially superior to assessments by nurses or patients<sup>42</sup>.

The intersection of continuous health monitoring and the valuable clinical information obtained from analysing human excreta lies in the smart toilet. Aside from a handful of prototypes, limited attempts by industrial manufacturers to build a consumer-grade smart toilet have been made. A Japanese company, has pursued the smart-toilet system since the mid-1980s and has published several patents on smart-toilet implementation<sup>43–45</sup>. One of its latest products, announced in 2008, however, lacks clinical utility and is not readily integrated with a user's electronic health record (EHR) system. Moreover, the major measurements are simple health data, such as urine temperature, diet, body fat and weight, which, unfortunately, rarely provide clinically actionable information. Moreover, with a listed price of US\$6,100 per unit (with complete installation), it is probably not affordable for common household use. Similar ideas and inventions to achieve a smart toilet have been introduced in various formats; however, they have not been successfully translated into the clinic-home interface. This is primarily due to the lack of actionable clinical data and compatibility of existing smart toilet systems with clinical decision-making. Furthermore, stool sampling and analysis have proven to be logistically challenging for existing commercial toilets because the homogenization of stool before analysis is non-trivial. Finally, both current urinalysis and stool analysis require some degree of human intervention to record results, both of which can be burdensome, can cause user variability and may result in an invasion of private health information—which is yet another barrier to the widespread use of the smart toilet for healthcare.

Here we present a proof-of-concept toilet technology for the delivery of non-invasive and robust measurements of excreta for continuous monitoring and precision health. We focus on clinically relevant assays for both urinalysis and stool analysis. Standard urinalysis test strips<sup>46</sup> were mounted within the toilet system and automatically interact with the urine stream with a motion sensor and a mechanical extender. Furthermore, video analysis of the urine stream conducted uroflowmetry to measure baselines and to identify abnormal urine flow associated with diseases. For stool analysis, images of stool in the toilet system were collected for grading on the BSFS using an automated classifier with a machine learning algorithm. It was also able to collect additional information, such as first stool dropping time and total seating time, which can

potentially be acted on by clinicians to help to manage constipation and haemorrhoids. Our system also uses fingerprinting and a distinctive method of using anal creases (the distinctive feature of the anoderm, referred to here as analprint) as biometric identifiers to securely associate the collected data with the user's identity. Together, these measurements were chosen to maximize the clinical utility (Supplementary Table 2) of the toilet while hopefully remaining affordable and widely deployable.

## Results

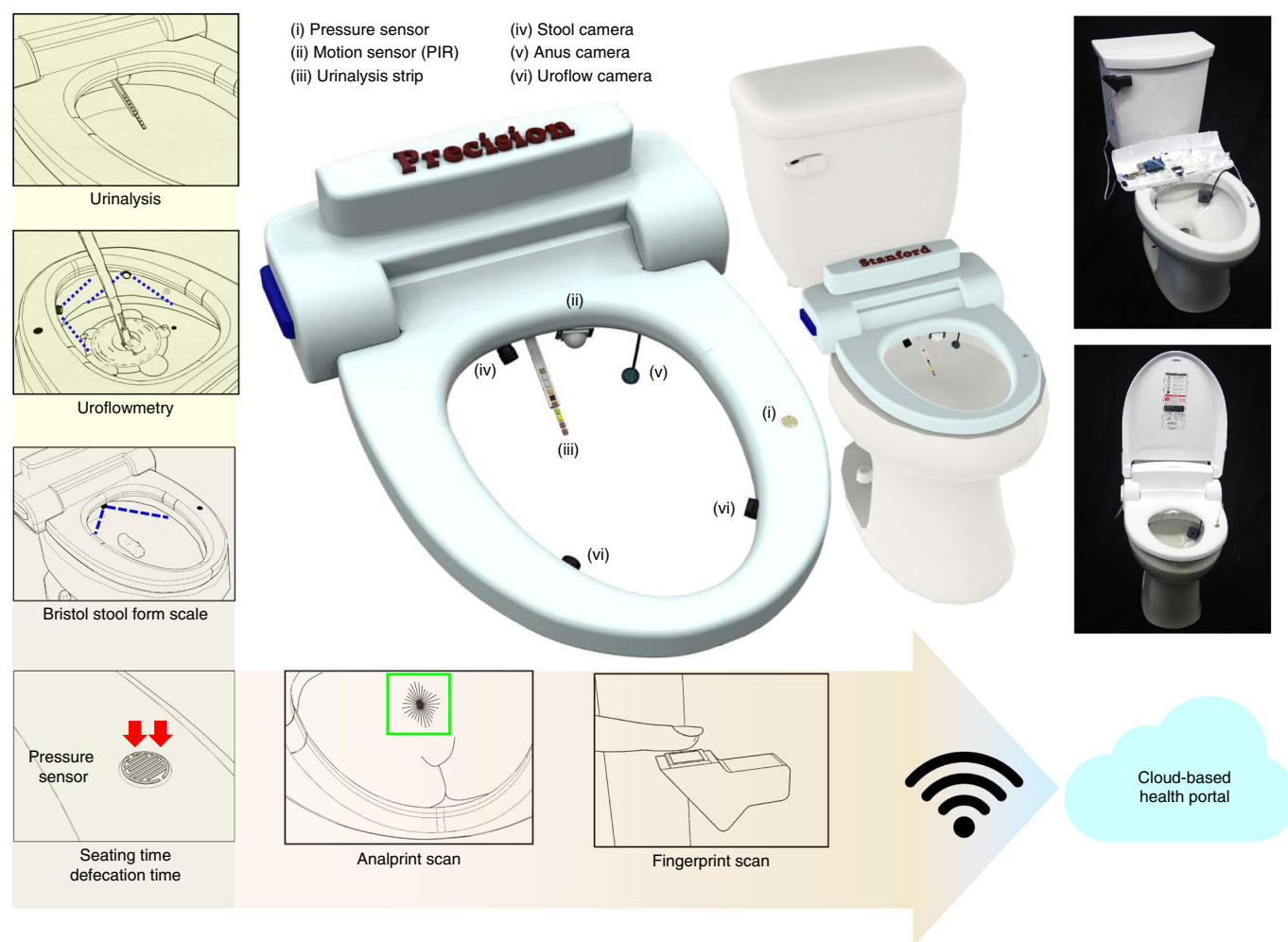
**Overall workflow.** We developed fully automated toilet modules that can be mounted onto existing toilets (Fig. 1). Three discrete modules for the toilet system were developed—urinalysis (10-parameter urinalysis test strip), uroflowmetry using computer-vision analysis, and stool analysis (classification in BSFS and defecation timings). The initial prototype includes two-factor user identification using flush lever fingerprinting and analprint recognition, and data from the urinalysis, uroflowmetry and stool analysis were automatically transferred to a cloud system. A schematic flowchart of the toilet system is provided in the Supplementary Schematic.

**Urinalysis.** Whereas traditional urinalysis includes chemical and microscopic examination of urine<sup>22</sup>, in this proof-of-concept study, we conducted biochemical urinalysis by integrating a ten-parameter urinalysis test strip<sup>46</sup> into the toilet system. This strip provides qualitative and semi-quantitative urinalysis of ten biomarkers: erythrocytes, urobilinogen, bilirubin, protein, nitrite, ketones, glucose, pH, specific gravity and leukocytes. Two participants (one male (aged 39 years) and one female (aged 39 years)) were instructed to use test strips whenever they voided (Supplementary Fig. 1).

To implement this module in the toilet system, we salvaged the external enclosure of a commercially available electronic bidet. We assumed a urination position of an adult male aiming towards the centre of the toilet bowl (Fig. 2, Supplementary Fig. 2). A deck of test strips are loaded into a cartridge, which was designed as an insert into the toilet system. The beginning of urination is automatically detected with a passive infrared motion sensor. After motion is detected, a test strip is automatically loaded onto the deployment unit and strips are deployed using a unipolar stepper motor. Rather than using the dip-stick method, direct spraying onto the strip was used for this application. After a sufficient amount of time for a user to fully saturate the strip with urine (30–60 s)<sup>47</sup>, the deployment unit is retracted into its original position, and then monitored by a video camera (Fig. 2a). Raw video data captured using a camera, with lighting conditions normalized by a white light-emitting diode (LED) strip, are analysed in real-time, including red–green–blue (RGB) kinematics and control versus active comparisons, which are then wirelessly transferred to a cloud storage facility (Fig. 2b,c, Supplementary Fig. 3). After urination is complete, a strip-discarding servo motor attached to the deployment module releases the used strip such that the strip is discarded into the toilet bowl. Moreover, to make the strip environmentally-friendly and safe for septic systems, we replaced the plastic backbone of the strip with a water-soluble polysaccharide backbone. An automatic strip feeder replenishes the strip after a urination event is complete.

**Computer-vision uroflowmeter.** A standard uroflowmeter (URODYN1000, Dantec Medical), which is installed in the Stanford Urology Clinic, uses the spinning-disk principle to measure the following metrics: voiding time, time to maximum flow, maximum flow rate, average flow rate and total voided volume. Parts of these metrics were integrated into the toilet system with computer-vision analysis.

As a proof of concept, we developed a computer-vision uroflowmetry module. Two high-speed cameras (GoPro Hero 7, GoPro) were positioned at two fixed locations close to and facing away from



**Fig. 1 | Schematic of the toilet system.** A perspective view of a toilet with a mountable device for continuously measuring baselines of human excreta. The toilet system includes (1) a 10-parameter test-strip-based urinalysis with a retractable cartridge; (2) computer-vision uroflowmetry with two high-speed cameras (the blue dotted lines represent the FOV from each camera); (3) stool classification by deep learning (the blue dotted lines represent the FOV of the defecation monitoring camera); (4) defecation time measurement detected by a pressure sensor below the toilet seat (the red arrow represents the force applied to the pressure sensor); (5) two-biometric identifications, an analprint scan (the green box represents the template-matching algorithm) and a fingerprint scanner on the flush lever; and (6) the ability to transfer all data by wireless communication to a cloud-based health portal system. Right: photographs of the actual system mounted on a toilet.

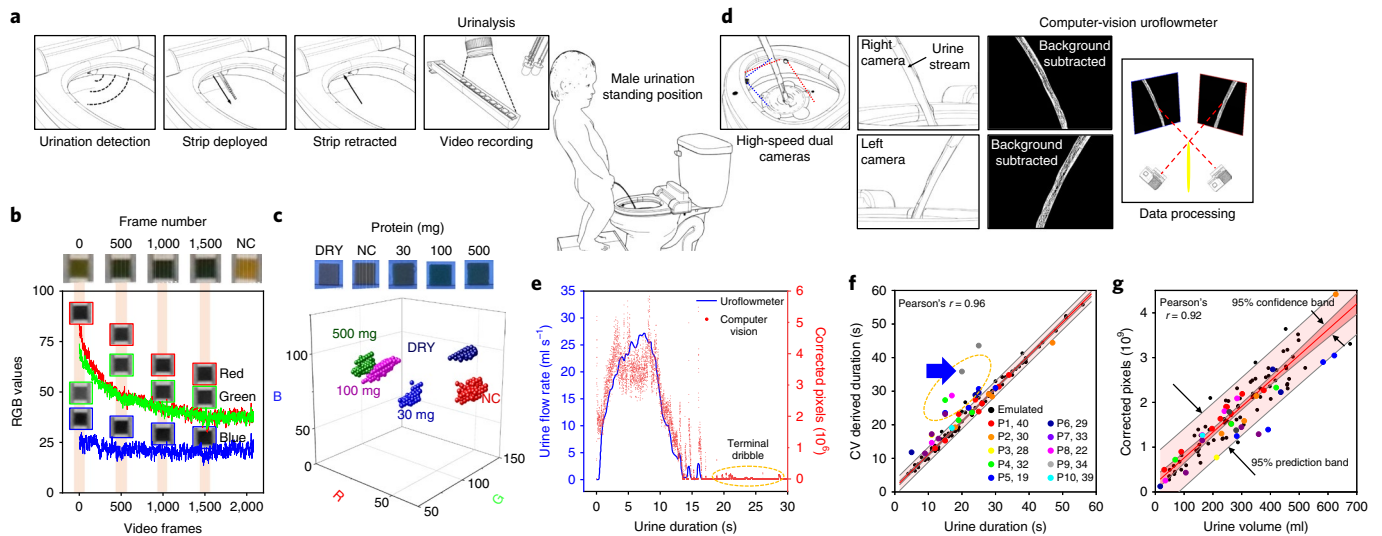
the user to record a series of frames of the urine stream. The camera setting was set to a resolution of  $960 \times 1280$  px, high speed (240 frames per second) and wide-angle field of view (FOV).

To assess the proposed uroflowmetry module, multiple emulated urination events within a normal physiological range<sup>48</sup> of between 50 ml and 670 ml and multiple urinations from ten male participants (aged 19–40) were recorded and analysed using the computer-vision uroflowmetry module (Fig. 2d). Ten male participants performed a total of 31 urinations and, additionally, 68 emulated streams were tested over a period of 5 weeks. Details regarding specific algorithms as well as the setup are provided in Supplementary Fig. 4. In brief, recorded videos from two cameras were fragmented into individual frames, preprocessed to extract the urine stream and synchronized for corrections. For accurate measurement of the total voided volume using the computer-vision uroflowmetry module, depth-correction and flow-rate-correction were performed. Geometric means of the pixel values from two cameras, in addition to the depth information, represent a three-dimensional (3D) volume of the urine stream. The flow rate estimation was performed by counting pixels in both the top and bottom regions of interest (ROIs; 10% in the vertical direction) within each frame and

running the cross-correlation function to estimate the frame shift between the two ROIs. The urine volume was represented as the sum of depth-corrected pixels divided by the frame shift calculated from the flow-rate estimation. Furthermore, the voiding time was estimated from the start point and the end point of the urination event with the known video frame rate.

To observe the urodynamics, we compared a micrograph generated using the standard uroflowmeter and a graph calculated using the computer-vision uroflowmetry method. In Fig. 2e, we noted that there is a significant correlation between the two. However, during the end phase of the urination—terminal dribbling, which was not detected by standard uroflowmetry but was successfully captured by computer-vision uroflowmetry—there were discrepancies in urination duration comparisons (Fig. 2f, blue arrow). Despite the discrepancies, voiding times recorded by standard uroflowmetry and computer-vision uroflowmetry had a high linear correlation with the number of video frames (Pearson's  $r=0.96$ ). We believe that inconsistencies with regard to terminal dribbling can provide valuable information about the prostate and bladder functions<sup>49</sup>.

Our algorithm also accurately determined the total voided volume using depth- and flow-rate-corrected pixel information from



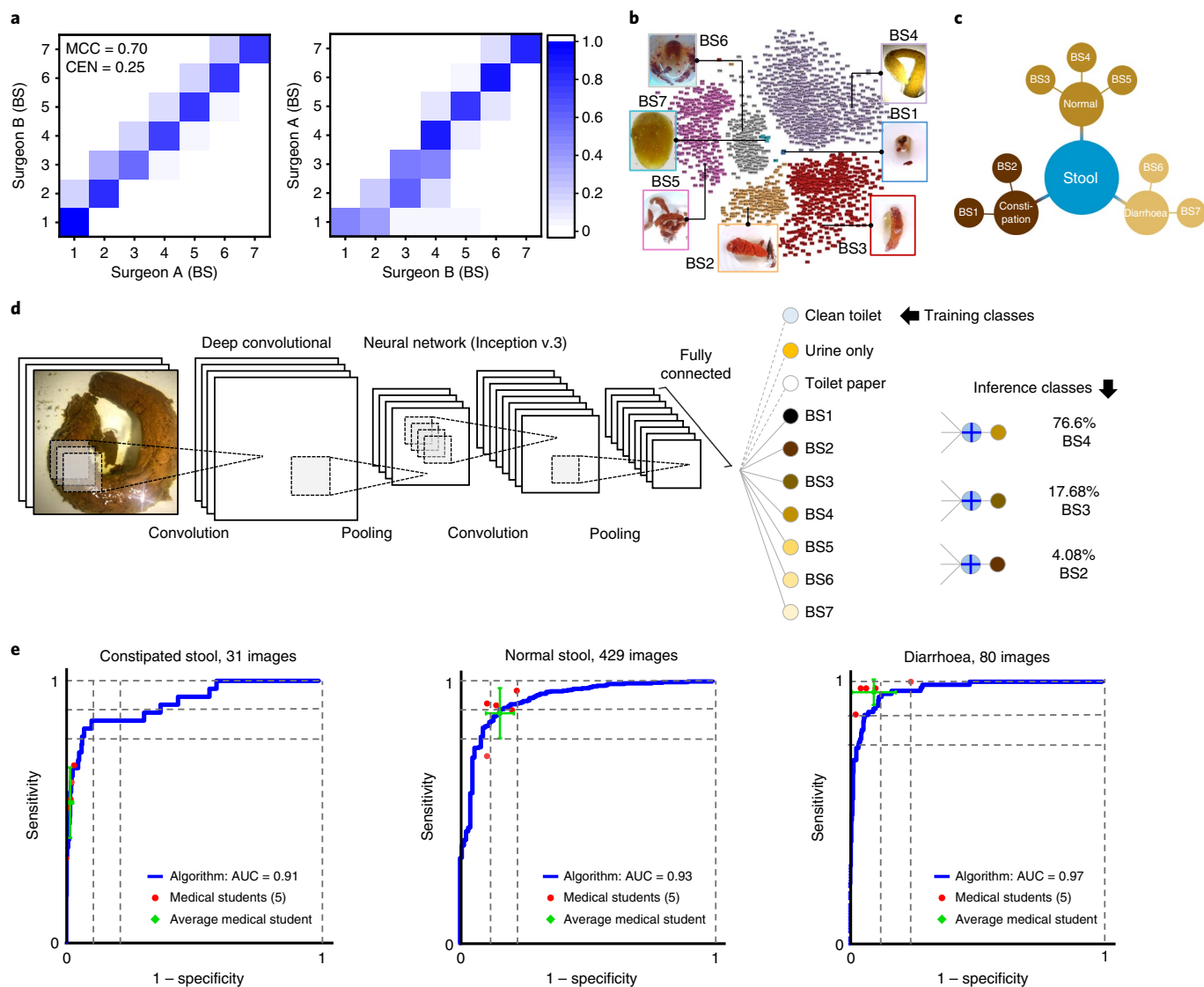
**Fig. 2 | Computer-vision urinalysis and uroflowmetry of the toilet system.** **a**, A systematic workflow (from left to right) showing the process through which the toilet system analyses data from urine strips. Urination is detected with the motion sensor. The strip is deployed and retracted using a unipolar stepper motor. Raw data are captured using a charged coupled device camera, with lighting conditions normalized by a white LED strip. **b**, The RGB-value kinetics of the protein pad was tested using a urine sample that was spiked with bovine serum albumin. NC stands for negative control without having protein in solution. **c**, The 3D representation of strip colour changes with titrated protein levels. DRY stands for the pad's original colour without wetting. **d**, Schematic uroflowmetry implementation in the toilet system. Urination is captured by two high-speed cameras (the red and blue dotted lines represent the FOV of each camera). The background is subtracted from each camera frame to isolate the urine flow. The urination volume and flow rate are estimated from two corrected video frames. **e**, An overlay of two graphs—one from the standard uroflowmeter (solid blue line) and another from the computer-vision uroflowmeter, which is represented by red dots also showing the terminal dribbles that are not detected by the standard uroflowmeter. **f**, Using a custom-made algorithm, the starting point and the end point of a urination event were automatically extracted. As the video frame rate is fixed, there is a linear correlation between the number of frames and the actual time recorded (Pearson's  $r = 0.96$ ). Some outliers (the points indicated by the yellow oval) were due to the terminal dribbles that were not detected using the gold-standard method. The blue arrow represents the urination time extracted from data shown in **e**. Participant (P) number and age (years) are indicated. CV, computer vision. **g**, Total voided volumes through depth- and flow-rate correction of two synchronized cameras were obtained and correlated with the total voided urine volume measured using uroflowmetry (Pearson's  $r = 0.92$ ).

synchronized video frames. This method showed a linear correlation (Pearson's  $r = 0.92$ ) between the corrected pixel sum as measured using computer-vision uroflowmetry and the total voided volume measured on the basis of standard uroflowmetry. The main discrepancies were caused by urine streams with an extremely high flow rate; nevertheless, this limitation could be resolved by using a higher-frame-rate camera to capture the stream in finer time stamps. The camera FOV can be further optimized by vertically increasing the FOV to capture more of each urine stream for better estimation of the urine volume and flow rate.

**Stool classification.** In contrast to the pathological assessment (biopsy) used in cancer diagnosis, there is no existing gold standard for BSFS classification because BSFS is based purely on visual assessment. Therefore, two board-certified general surgeons (subspecialty of coloproctology) independently annotated all of the stool images with a corresponding BSFS to assign them as the gold standard. To compare their classification concordance, we created confusion matrices, which describe the performance of a classifier on the basis of true values (Fig. 3a). The level of concordance was then measured using the Matthews correlation coefficient (MCC), which is a multiclass generalization of a classic metric that ranges from 1 (perfect classification) to  $-1$  (asymptotic extreme misclassification). Furthermore, the confusion entropy (CEN), a measure of performance in multiclass problems, was calculated from the confusion matrices<sup>50–52</sup>, ranging from 0 (perfect classification) to 1 (complete misclassification). The MCC and CEN values were calculated as 0.70 and 0.25, respectively, showing a satisfactory agreement between the two surgeons. The calculations are provided in detail in Supplementary Table 3.

Initially, we retrained Inception v.3 on ten toilet classes comprising the seven BSFS classes plus three other toilet classes (clean state, urine state and toilet paper state; Fig. 3). Here we reduced this medically relevant classification to a trichotomous decision task—constipated stool, normal stool and diarrhoea (Fig. 3 and Supplementary Fig. 5). BS1 and BS2 of the BSFS are regarded as abnormally hard stools (indicative of constipation in conjunction with other symptoms), whereas BS6 and BS7 are regarded as abnormal liquid/soft stools (indicative of diarrhoea with other symptoms). The other types—BS3, BS4 and BS5—are generally considered to be the most normal and modal forms of stool in the healthy adult population<sup>33</sup>. As receiver operating characteristic (ROC) analysis is traditionally used for dichotomous diagnostic tasks, the corresponding ROCs were reduced to a dichotomous classification on the basis of a multiclass-classification strategy, the one versus rest approach, with the samples of the corresponding class as positive samples and all of the other samples as negative samples.

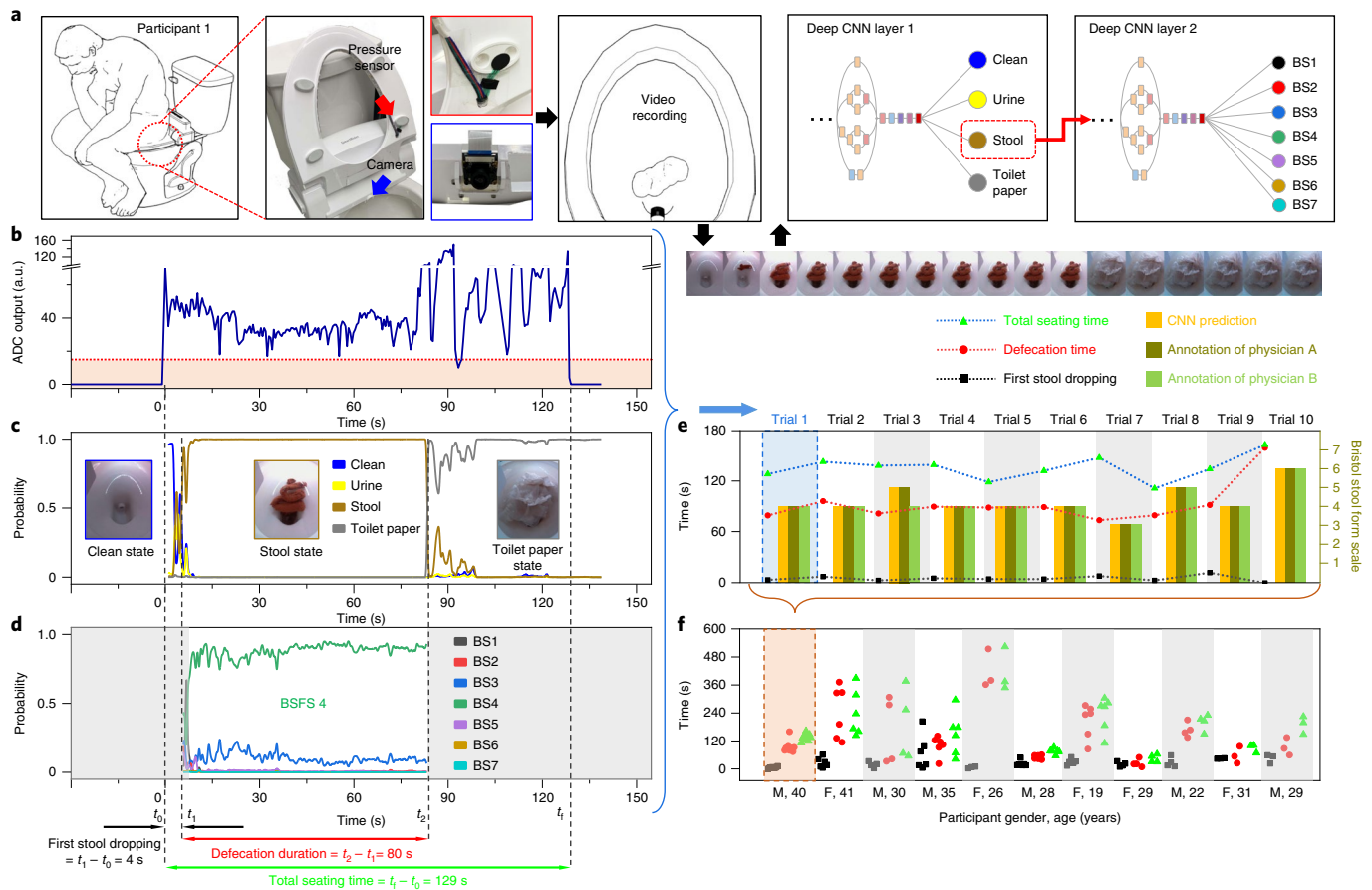
Two independent gold standards by these surgeons were used for deep convolutional neural network (CNN) training (we therefore have two independent CNNs). To benchmark the classification performance of the trained CNNs, six medical students, all of whom had completed at least 2 years of medical school training, were recruited to score the same image sets so that their performance could be directly compared with CNNs. Originally, although they were aware of BSFS, the students had not been trained specifically on grading stools with the BSFS. In Fig. 3e and Supplementary Fig. 5, the same group of medical students (six for the training set and five for the test set) produced a single prediction per image, represented by single red points. Averages of the medical students for each task are represented by green points (calculated from  $n = 6$  (training set) and  $n = 5$



**Fig. 3 | CNN for stool analysis.** **a**, Confusion matrices comparison between the colorectal stool classifications made by two surgeons. The values on the x and y axes indicate the BSFS. Two confusion matrices were generated by defining the classification of one surgeon as ‘ground truth’, as BSFS is based purely on visual assessment. To calculate the percentages for each class, each cell was normalized in the corresponding row. A classic metric for the multiclass classification, MCC (−1 for complete misclassification and 1 for perfect classification), and a measure of performance in multiclass classification, CEN (0 for perfect classification and −1 for complete misclassification), were calculated and are shown. **b**, *t*-Distributed stochastic neighbour embedding visualization of the last hidden-layer representations in the CNN for seven stool classes. This graph describes the CNN’s internal representation of seven stool classes by applying *t*-distributed stochastic neighbour embedding—a method for visualizing high-dimensional data—to the last hidden-layer representation in the CNN of the board-certified-surgeon-proven photographic test sets (2,362 images). The coloured point clouds represent the different stool categories, showing how the CNN clusters the stools. Inset: exemplary micrographs corresponding to various class points. **c**, A schematic of the stool taxonomy. BS1 and BS2 of BSFS are regarded as abnormally hard stools (denoted as constipation), whereas BS6 and BS7 are regarded as abnormal liquid/soft stools (denoted as diarrhoea). Other types—BS3, BS4 and BS5—are generally considered to be the most normal and modal stool forms in the healthy adult population (denoted as normal). **d**, CNN layout. A deep CNN was used as our classification technique. We retrained the final layer of the previously trained Inception v.3 model with new categories—toilet states and stool states. The training classes include ten toilet classes comprising the seven BSFS classes in addition to three other toilet classes (clean state, urine state and toilet-paper state). **e**, The performances of the CNN were compared with those of medical students. Five medical students produced a single prediction per image (red points). The averages and s.d. of the medical students for each task were represented by green points, lines and caps. When using a completely new stool image set, the CNN provided accuracy that was comparable with those of trained medical students. All AUCs were greater than 0.91. The gold standard for BSFS classification was provided by a board-certified general surgeon (subspecialty of coloproctology).

(test set) students, for constipated stool, normal stool and diarrhoea). For each given image, the deep CNN yields a stool class probability  $P$ . The prediction  $\hat{y}$  is defined by  $\hat{y} = P \geq t$  when a threshold probability  $t$  was fixed. To calculate the performance of the CNN, an area under the curve (AUC; represented by a blue curve in the graph),

with a minimum value of 0.5 and a maximum value of 1, was calculated based on drawing blue curves by sweeping  $t$  in the interval 0–1. Regardless of the gold standard for stool classification selected, the CNN showed better performance than the untrained medical students in the training sets and demonstrated comparable results



**Fig. 4 | Defecation monitoring module of the toilet system.** **a**, A systematic workflow for defecation monitoring. As a user sits on the toilet for a defecation event, the pressure sensor below the toilet seat initiates the defecation monitoring camera. The camera records the toilet bowl until the end of the defecation event. The collected images are then fed into deep CNN layers for stool classification. **b**, When the pressure sensor installed on the toilet seat is triggered after the user sits down ( $t_0$ ), a video recording assisted by LED lighting is initiated. The video camera records the entire defecation process (from  $t_0$  to  $t_1$  and an additional 30 s as the grace period). Fragmented frames are sent to a cloud system for the application of a machine learning algorithm for toilet state classification and stool classification. An exemplary graph from participant 1 is shown. The total seating time of the participant was 129 s. **c**, Acquired images are classified by the first custom CNN to determine a toilet state, which consists of clean, urine, stool and toilet paper. In the graph, the toilet starts with the clean state (from 0 to 4 s), changes to the stool state (from 4 s to 80 s) and finally changes to the toilet paper state (80 s and thereafter). In this case, the end of defecation was determined by the point at which participant 1 used toilet paper. **d**, If a toilet state is in the stool state, the images are then introduced to the second custom CNN to determine their BSFS. The graph indicates that the CNN prediction of BSFS is majorly BS4, representing normal stool. When the pressure sensor returns a null signal ( $t_1$ ), the fingerprint scanner installed on the tank flush identifies the user and the user information is annotated to the data. **e**, In addition to stool classification information, other information, such as total defecating time (either  $t_2 - t_1$  or  $t_3 - t_1$ ) and first stool dropping time after the seating ( $t_1 - t_0$ ), are obtained. Ten series of defecation events completed by participant 1 are shown. All of the stool BSFS classifications were benchmarked against both surgeons (bar graphs). **f**, Eleven participants (five females and six males, aged from 19 to 41) generated 55 defecation events. Associated information, such as first stool dropping times, defecation durations and total seating times, are shown.

with trained medical students in the test sets. In the training sets, the AUCs for each case was over 0.97, whereas, in the test sets, the AUCs for each case had a minimum of 0.89. Twelve ROCs were generated from algorithms trained by each surgeon (Supplementary Fig. 5).

**Defecation monitoring.** We housed the defecation-monitoring module in the external enclosure of a commercially available electronic bidet. A pressure sensor (FSR 402, Interlink Electronics) consisting of a force sensitive resistor (FSR) was installed underneath the toilet seat to detect the initiation of the defecation process (Fig. 4). When the user applies pressure onto the FSR, the decrease in resistance confirms the presence of a user. An analogue-to-digital converter (MCP3008, MicroChip Technology) is used to convert the analogue signals from the FSR to digital signals that can be read by a microcomputer (Raspberry Pi v.3). By reading the signal duration from the FSR, we are able to estimate the total seating time of

a user. Once a signal from the FSR is detected, the microcomputer relays the signal to initiate LEDs and video recording of the toilet. An LED strip is installed under the toilet seat, ensuring the exact same lighting conditions during each toilet use. The video camera is installed in the rear portion of the toilet seat and housed within the commercial electronic bidet enclosure (Fig. 4a). The video camera captures the toilet image continuously while the pressure sensor returns signals above a threshold, including a grace period of an additional 30 s. After acquisition, these images are fed to the first custom-trained deep CNN, which distinguishes between the possible states of the toilet—clean, urine, stool or toilet paper. By using the first custom CNN, we are able to determine the first stool dropping time, which is significantly correlated with overall bowel function. The first stool dropping time is estimated by the duration of time between a clean or urine state and a stool state. As every image is annotated with a corresponding time-stamp, the duration can be

easily calculated. In a similar manner, defecation duration can be calculated by either calculating the duration between a stool state and a toilet paper state or the duration between the first stool dropping time and null signals lasting more than 30 s from the pressure sensor. Here we assumed that the use of toilet paper or standing up indicates the user's intention to terminate the defecation event. Once an image is determined to belong to the stool state, it is fed to the second custom trained deep CNN to determine its BSFS.

To determine the prediction accuracy of developed module, 11 participants (5 females and 6 males) were recruited for system testing over a period of 5 weeks. The research participants were instructed to use the toilet system as they would use any normal toilet. All of the participants completed multiple of defecations up to 10 events, and a total of 55 defecation events were recorded. The participants' first stool dropping times, defecation durations, seating times and corresponding BSFSs were obtained, parts of the results of which are shown in Fig. 4. BSFSs were acquired from the toilet's CNN prediction, the general surgeons and the users themselves. Only two research participants graded their own stool, whereas the other nine participants declined to review/grade their own stool. The CNN prediction for BSFS was quite accurate—the predictions of the CNN and the surgeons align well with one another (match rate of 76.35% between surgeon A and CNN A and 74.54% between surgeon B and CNN B). Once the CNN had been retrained using additional participant data, the match rate of the evolved CNN (CNN A) was raised to 85.45%. It should be noted that 81.81% of mismatch cases were comprised of either cases with a scale difference of 1 in BSFS (for example, CNN prediction: 3 and surgeon's annotation: 4) or cases in which the second most prediction of the CNN matched with the surgeon's annotation. As expected, the annotations of the participants showed a lower match rate with the annotations of the surgeons. The overall match rate between the grading of the participants and the surgeons was 64.28%.

The toilet has the ability to observe the dynamic changes of stool—that is, stool morphology and liquidity changes over time in the toilet bowl—which have not been investigated in the field. This change sometimes results in mixed types of BSFS. Furthermore, the CNN prediction for extreme BSFS (scale 1) showed poor prediction owing to the low number of training samples at the beginning; however, during the course of the toilet development, a substantial number of stool images were added, such that the CNN can be significantly improved to provide more accurate predictions. Moreover, a mobile application embedded with the retrained CNN was developed for users who want to continuously monitor their stools in an ordinary toilet environment (Supplementary Fig. 6).

**User identification.** User identification in the toilet system is crucial as the system is expected to be shared with housemates. Over time, it will eventually be integrated into the EHR, so that every toileting event will be recorded and associated with the user. To accomplish this, we used two methods of biometric identification. First, we designed a fingerprint scanner embedded in the flush lever. A 3D-printed flush lever containing a fingerprint scanner was attached to the toilet (Fig. 5a). At the end of each urination and/or defecation event, the fingerprint scanner prompts a user through a green light indicator. When the user actuates the flush lever, his/her fingerprint is registered by the embedded scanner. All collected data (images and videos), in their raw data formats, were annotated with respect to the user and transmitted to a cloud system through wireless communication. To validate the fingerprint identification module, we performed 'genuine' and 'impostor' judge studies<sup>54</sup>; genuine scores indicate the level of agreement between multiple samples of the one's fingerprint and impostor scores are obtained by matching samples from different fingers. In the following analysis, ten participants (five females and five males) registered their fingerprints more than ten times (a total of 410 times from all of

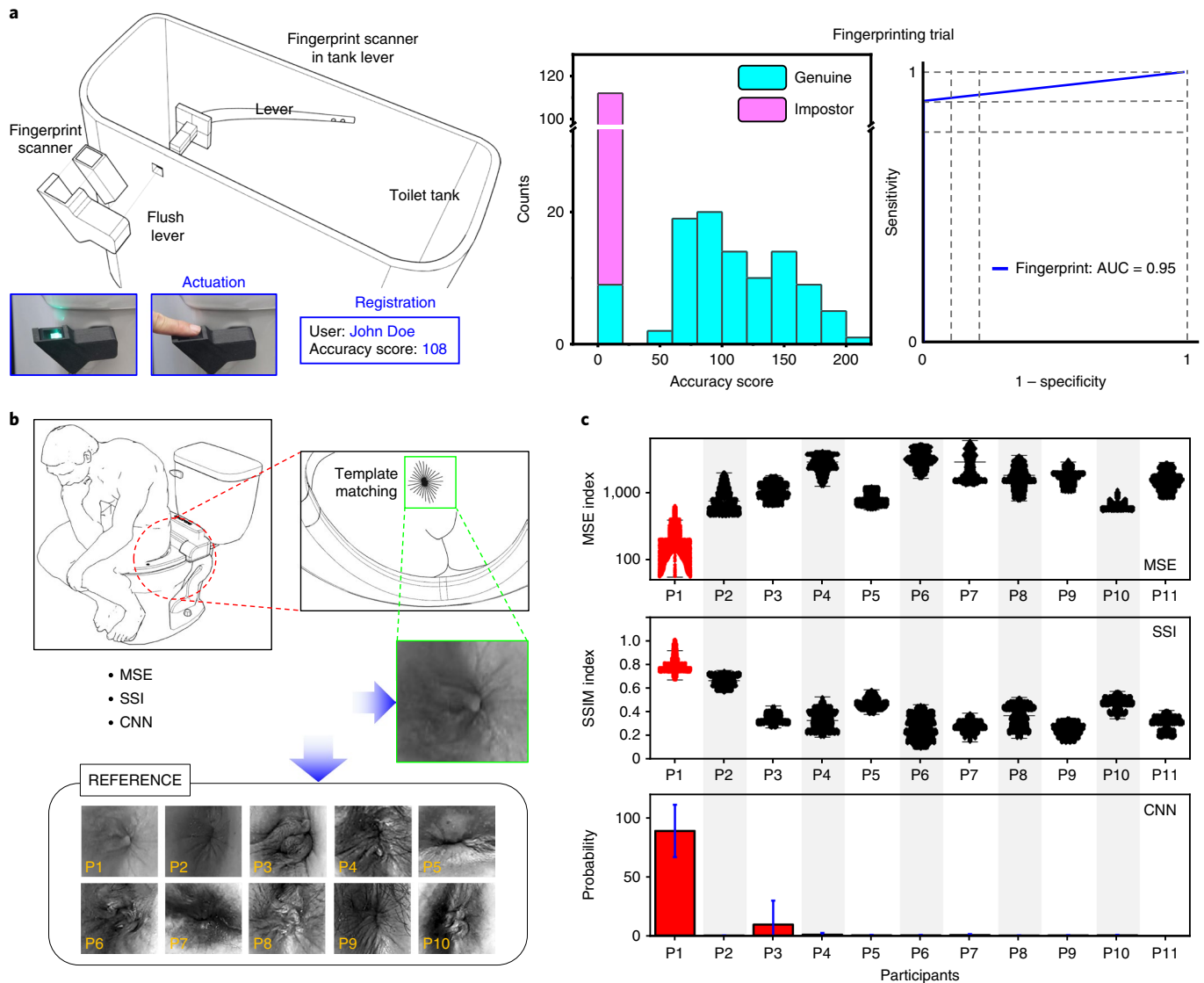
the participants) and a histogram of accuracy scores was plotted (Fig. 5a). Note that the negligible overlap indicates an excellent identification ability between different fingerprint samples. Furthermore, the ROC curve was generated, and AUC was 0.95 (Fig. 5a).

To ensure EHR compatibility, an additional method of biometric identification was used. Although the fingerprint scanner installed on the tank lever provides reasonable user identification, some scenarios may be misleading in an identification process. For example, if someone other than the original user flushes the toilet, it causes confounding errors in identification. Furthermore, some industry-level smart toilets are already equipped with automatic flushing without the flush lever and, therefore, require different identification methods.

Another identification method—utilizing the analprint, which is user-specific—was therefore designed and implemented into the toilet system. A scanner was installed to record a short video clip of the user's anus. The ROI—the anus—was then identified using an image recognition algorithm (template matching; Fig. 5b). The video clip was divided into frames and then compared with a set of reference images of the user's analprint. To test the feasibility of this approach, ani from 11 research participants were analysed and the anus morphologies were compared (Stanford Institutional Review Board (IRB) approval, 45621; Seoul Song Do Hospital IRB approval, 2018-008). Among 11 participants, two video clips of the anus per participant were acquired from 7 participants, whereas one video clip of the anus per participant was acquired from 4 participants. As stated, all of the video clips were fragmented into frames. Three algorithms were used to compare the fragmented frames with the reference frames stored in the system—the mean squared error (MSE)<sup>55</sup>, the structural similarity index measure<sup>56</sup> (SSIM) and a CNN. The MSE is the simplest and most widely adopted full-reference-quality metric that calculates the average of the squared intensity differences in the pixels of acquired and reference images, along with the related peak signal-to-noise ratio by scaling the MSE according to the image range. An MSE value of 0 indicates perfect similarity, whereas an MSE value of greater than 100 implies less similarity and will continue to grow as the average difference between pixel intensities increases as well. Whereas the MSE measures the perceived errors from pixels, SSIM estimates the perceived change in the structural information of the image. SSIM values range from  $-1$  to  $1$ , where  $1$  stands for perfect similarity and  $-1$  for the complete dissimilarity. The third method of the measurement is the same CNN architecture for stool analysis. We again adapted a transfer-learning technique to train the machine for classification. Detailed descriptions of all of the above algorithms are provided in the Supplementary Information. An example of biometric identification that uses analprints is demonstrated in Fig. 5 and Supplementary Table 4. All three algorithms provided a reasonable distinction of the participants by analysing their analprint. These results demonstrate that it is possible to use anus morphology as a biometric identifier.

## Discussion

Precision health and continuous health monitoring relies on an accurate model of human disease to predict or detect disease<sup>5</sup>. For effective continuous health monitoring, considerable progress has been made in the development of wearable devices; however, these devices still require a certain degree of conscious intervention and compliance that may hinder the implementation of precision health. To overcome these limitations, we have developed a passive human health monitoring system that can be easily incorporated into a normal daily routine requiring minimal or even no human intervention. Our current toilet system consists of several independent modules (urinalysis, uroflowmetry, defecation monitoring and biometric identification) that use sensors, machine-learning



**Fig. 5 | Biometric identifications using the fingerprint and the anal creases (the distinctive features of anoderm, or analprint).** **a**, Installation of a fingerprint scanner in the flush lever. We performed 410 fingerprinting trials from 10 participants, and the associated histogram and the ROC curve are shown. The AUC was 0.95. **b**, Schematic of analprint analysis for biometric identification. Video frames (high-definition resolution) acquired by a camera were analysed and referenced to stored image sets. Three algorithms were used to compare those two sets of images—MSE measure, SSIM and CNN. Among 11 participants, two video clips of the anus per participant were acquired from 7 participants, whereas one video clip of the anus per participant was acquired from 4 participants. **c**, As an input, individual frames of the anus from participant 1 were used for identification purposes. Simple box plots—including medians, first quartiles and third quartiles, overlapped with data points (representing individual frame comparisons)—are shown for the MSE index and SSIM calculation. We performed 10,201 comparisons among video-extracted frames for each participant except for participant 4, for whom we performed 10,908 comparisons. Probability histograms with error bars (standard deviations from averaging individual frames) are shown for CNN. For each participant, 301 frames from the video were extracted and fed to the CNN. The averages of the CNN predications from 301 frames are shown. When combined, all three methods provide precise user recognition with a high accuracy.

algorithms and computer-vision assays to acquire basic properties (such as temporal parameters of urination and defecation, morphology of stool, flow parameters of urination, biochemical constituents of urine) of human excreta in a convenient manner. Using the acquired parameters, the current toilet system has the potential to help diagnose/monitor irritable bowel syndrome, benign prostatic hyperplasia and/or urinary tract infection by collecting stool/voiding diaries and urine dipstick tests. In the future, we aim for our toilet system to be an all-in-one, autonomous, non-invasive and more affordable device, as well as being clinically applicable by enabling the targeting of various diseases. The toilet will ultimately function as the daily clinic for continuous monitoring of human

excreta, feeding data into models of human health that can be used for screening and subsequent diagnostics. The toilet facilitates streamlined and diligent data reporting, enabling seamless collection of longitudinal data for users with consistency and detail that was not possible before the era of the internet of things and reliable machine learning.

**Clinical implications.** Emerging continuous-monitoring technologies require thorough clinical trials with large populations to determine whether they improve disease detection and early intervention. However, in most cases, the technology must first be developed before it can be validated, as the validation is dependent on

the final form of the technology. The current toilet system is not yet a screening or diagnostic tool as such. Although the data collected by the current version of the toilet do not directly enable the diagnosis of a disease state, they help to augment our understanding of human health and identify a baseline, or threshold, from which to identify disease.

To achieve this goal, the prototype of the toilet aims to measure very fundamental physical/biochemical parameters from human waste products. Our first criterion was smart adaptation of routine clinical tests in an ordinary toilet. The toilet therefore performs routine urinalysis on the basis of a colorimetric test strip and uroflowmetry, which are widely used and validated clinical tools<sup>22</sup>. Furthermore, our toilet system provides routine, clinically relevant stool analysis on the basis of the BSFS using a CNN. Although comprehensive stool analysis involves biochemical analysis of the stool (including microbiome analysis), it requires bulky and expensive analytical equipment as stool is inherently heterogeneous in contrast to relatively homogeneous urine. This would inevitably require a more expensive and complex biochemical analysis system, possibly hindering the widespread use of the toilet. Instead of analysing the biochemical composition of stool, analysing the morphology and liquidity of stool provides a more convenient and straightforward method to derive potential clinical insights. An evidence-based stool-analysis method based on morphology and liquidity, BSFS, has been extensively utilized in both clinical practice and research<sup>39,42,53,57</sup>. As stool morphology is directly correlated with transit time in the lower gastrointestinal tract, it can be used to obtain signs of a wide range of diseases that affect the gastrointestinal system<sup>57</sup>, such as inflammatory bowel diseases. Measuring stool on the BSFS provides insights into physiology and disease, such as bacterial growth rate, bile acid metabolism, oestrogen metabolism, irritable bowel syndrome and neoplasias<sup>57</sup>. Furthermore, as the BSFS is formulated to be purely reliant on visual assessment and described in everyday language (Supplementary Table 1), it is theoretically possible for an untrained person to classify their own stool. The BSFS classifications are especially valuable when many data points are obtained in continuous monitoring; however, classifying one's own stool is sometimes unpleasant and requires extra effort for the participant, hampering reliable self-reporting over an extended period of time. A certain level of disparities between the descriptions of stool by patients and true stool classification<sup>41</sup> as well as superior annotations by physicians<sup>42</sup> lead to demand for a more objective and reliable method to measure stool classification, especially for continuous monitoring. Deep CNNs have great potential for general and highly variable classification tasks across numerous object categories. Recently, a CNN was developed that exhibited an accuracy comparable to that of a dermatologist in identifying skin cancer when presented with images of skin lesions<sup>58</sup>. In a similar manner, we adopted this strategy for precise classification of human stool using a single CNN that was trained using stool image files comprising pixel values and labelled with corresponding stool classes. In this manner, the CNN is able to identify stool class reliably during defecation. Furthermore, the combination of computer-vision image analysis, mechanical retractable cartridge and a simple computing unit can provide clinically relevant data. Point-of-care devices and tools that are commercially available and/or investigated under active research can be integrated into the future toilet system to provide a clear pipeline to clinical decision making. A list of potential disease screening that may eventually benefit from the toilet is provided in Supplementary Table 2.

**User acceptance, data security and privacy protection.** Ideas similar to this toilet have been discussed for many years in the medical engineering community with few tangible outcomes to date. This impediment in scientific innovation may be in part due to the taboo on publicly broaching and discussing private matters such as human

waste, excretory organs and genitalia. In other words, much like the internet of things and telemedicine, a technological innovation such as this toilet is inherently linked to the risks and uncertainties surrounding its protection of private health data and the user's privacy. Furthermore, the widespread use of such technological innovations will be heavily dependent on user acceptance and compliance.

To gauge the user acceptance level of the proposed toilet concept, we created and distributed a short survey to the Stanford community (Stanford IRB, 51666; total respondents, 300). We note that our current survey population is biased because it represents a highly educated group from one geographical location (Supplementary Fig. 7). Despite this biased population, the overall acceptance level of the toilet system (Supplementary Fig. 8) was within an acceptable range as the majority of responses were either 'somewhat comfortable' (37.33%) or 'very comfortable' (15.33%) to use the toilet system, whereas 30.00% of the respondents feel uncomfortable to use the system (on the basis of the 5-point Likert scale). The vast majority of the concerns of participants were regarding privacy protection and data security enactment in the toilet system. Interestingly, we observed a statistically significant preference of non-camera-based modules (the urinalysis and fingerprint modules over uroflowmetry, stool analysis and analprint modules combined;  $P < 0.0001$ , two-sample *t*-test). The most accepted module is urinalysis, whereas the least favoured module is analprint. In this survey, no gender discrepancy was observed except for the stool analysis module (males are more favourable to this module). The survey information is provided in detail in the Supplementary Information.

Since the beginning of the project, we have taken the privacy and data security of users very seriously. For the data security, our protocols were thoroughly reviewed and approved by two institutional review boards and even further evaluated with Data Risk Assessment (DRA) by the Stanford Information Security Office and University Privacy Office. Our research protocol has strictly followed the recommendations of the Stanford DRA to ensure data security. The recommendations of the DRA are provided in detail in the Supplementary Information. As the data collected from the toilet prototype are regarded as protected health information of the research participants, the transmission and storage of such data have been compliant with the Health Insurance Portability and Accountability Act of 1996 (HIPAA).

**Current limitations.** The current version of the toilet system has been developed in a modular format, which requires industrial-level product design, process design and integration, and quality control as a healthcare product. Inherently, a toilet environment is not sterile, which may lead to false positives in biochemical assays integrated in the toilet system. Self-cleaning mechanisms therefore have to be developed, adopted and integrated after each use in the future to maximize the accuracy of any given assays in the toilet. Moreover, the current system is not compatible with squatting toilets, but with only sitting toilets (known as western style toilets). Although there is a considerable global trend towards more sitting toilets<sup>59</sup>, from an engineering viewpoint, mounting a toilet system onto a squatting toilet is not technically challenging. Nonetheless, squatting toilets often coincide with use by populations in which the most urgent need is for sanitation and the prevention of infectious diseases. Health monitoring remains important; however, it is beyond the scope of what is urgently needed by some populations. Globally, approximately 1 billion people have no access to a toilet at all and are forced to defecate in the open. Diseases transmitted through the faecal-oral route or by water, such as cholera and typhoid fever, can be spread by open defecation. They can also be spread by unkempt toilets, which cause pollution of surface water or groundwater. In this case, rather than a health monitoring functionality, sanitation will be a key functionality in squatting toilet systems. Nonetheless, we have developed a mobile phone application

to minimize any disparity caused by not having a toilet system for health monitoring (Supplementary Fig. 6).

The urinalysis and uroflowmetry modules presented in this study have been tested for only standing male participants because of the differences in female and male urinary stream. Both genders will be covered in the future toilet system. For example, an extendable wand can deploy the urinalysis strip toward the potential location of the female urine stream. Another approach for implementing the uroflowmetry module is sonouroflowmetry, which uses sound to estimate the urine flow rate and volume<sup>60</sup>. Sonouroflowmetry can be implemented for both male and female users, in sitting or standing positions, while avoiding optical scans of the user's body parts.

**Outlook.** In future research, we aim to include multiple, clinically relevant assays in our system: (1) microfluidics observation of cellular components from urine, (2) physical, quantitative analysis of defecation and (3) sample-to-answer type biochemical analysis of stool, including genomics and microbiomics. For quantitative stool analysis, the anal scanner, which is used for analprint recognition, will be used to monitor the entire defecation processes. Using a similar algorithm as that used in the above-mentioned uroflowmetry, the total volume of defecation and the colour of stool will be measured using only image analysis. The expected result is a precise description of hydrodynamics of human defecation<sup>61</sup>. For biochemical stool analysis, a standard guaiac faecal occult blood test<sup>62–64</sup> (gFOBT) will be used. It is used to detect the presence of faecal occult blood and is a logical choice for toilet integration. gFOBT is used to diagnose not only colorectal cancer, but also gastroesophageal cancer, gastrointestinal bleeds, diverticulosis, haemorrhoids, anal fissures, colon polyps, ulcerative colitis and Crohn's disease. Luminol, which is similarly used in forensic investigation, is a candidate to detect this occult blood in stools. Faecal calprotectin<sup>34–36</sup> levels may also be of importance and under surveillance as this biomarker indicates inflammatory processes. Furthermore, a great deal of progress into the understanding of the microbiome has been made<sup>65–68</sup>, and the future toilet can take advantage of this by including microbiome analysis. Finally, to implement personalized medicine, additional biochemical analysis—on the basis of biomarkers for a specific disease/illicit substance screening—will be added to the future system. For urinalysis, potential panels include screening capabilities of illegal drugs, sexually transmitted infections, urinary tract infections, alcohol abuse and maternity, all of which are already in the market. We also aim to develop nanoassays for on-demand biomarkers indicative of specific diseases. We envision that the future toilet has a customized monitoring system with personalized assays according to the opinion of healthcare professionals on the basis of the risk assessment of the user.

Biochemical analyses of human excreta in a toilet environment would require bulky and expensive analytical instruments and complex sample preparation modules for downstream analysis. Inevitably, it requires a more expensive and complex biochemical analysis system that may not fit within the dimensions of a toilet. A sample-to-answer type test is therefore more appropriate in the toilet system. To implement these types of assays within the toilet system, standard workflows for biochemical analyses of urine/stool will be developed and incorporated. This workflow includes four subprocesses regarding a point-of-care assay development, including (1) sample collection and preservation, (2) sample preparation, (3) molecular recognition, amplification and signal transduction, and (4) system integration. The implementation strategies are provided in detail in the Supplementary Information.

This toilet system is expected to have a major impact on health monitoring research, as the toilet enables longitudinal monitoring of human health with minimal interference of human behaviour. It enables patients to reliably obtain data for their own health as well as enabling investigators to conduct large clinical trials. Future

large clinical studies will investigate normal baseline data to optimize the threshold for alerting abnormal results, monitoring frequency, performance accuracy and cost. One major objective will be to mitigate overdiagnosis, which can be associated with harm, such as false alerts, alert fatigue and unnecessary medical treatment<sup>5</sup>. The collected baselines will not only be used for guiding the treatment and management of specific diseases but can also serve as a 'canary in coal mine' for timely identification and mitigation of many serious conditions.

## Methods

**Urinalysis.** Synthetic urine was used for colorimetric calibration in videos. For test-strip analysis, synthetic urine was generated using 1,000 ml of 0.02 M hydrogen chloride (HCl) solution, 1.9 ml of 25% v/v solution of ammonia, 14.1 g sodium chloride (NaCl), 2.8 g potassium chloride (KCl), 17.3 g urea, 0.6 g calcium chloride (CaCl<sub>2</sub>) and 0.43 g magnesium sulfate (MgSO<sub>4</sub>). The synthesized urine was spiked with corresponding chemicals, including bovine serum albumin for proteins. A dip-and-read test strip, the Accustrip URS 10 Reagent strip (Jant Pharmacal), was used for urinalysis. The test strip delivers qualitative and semi-quantitative tests for erythrocyte, urobilinogen, bilirubin, protein, nitrite, ketones, glucose, pH, specific gravity and leukocytes by visual assessment compared with a colour chart provided for each concentration range. For accurate strip reads, the test strip was instrumentally read using the Accustrip URS reader (Jant Pharmacal) and compared with the results generated using our algorithm.

**Uroflowmeter.** For uroflowmetry implementation, the above-mentioned synthetic urine was used for video calibration (Supplementary Information). All calibration was compared to the gold standard provided by a clinical grade uroflowmeter (URODYN1000, Dantec Medical)

**Image analysis of stool.** After images were captured in the toilet, they were then classified using a machine learning algorithm<sup>58</sup>. In short, a GoogLeNet Inception v.3 (Google) CNN architecture was used because it is available as open source software and has previously been trained on approximately 1.3 million images (1,000 object categories) for the ImageNet Large Visual Recognition Challenge<sup>69,70</sup>. We retrained this architecture, using a process known as transfer learning during which insights gained while solving one specific task with a machine learning algorithm are applied to a different but related task using TensorFlow<sup>70</sup>. In our case, we retrained Inception v.3 on 10 toilet classes comprising the seven BSFS classes in addition to three other toilet classes: the clean state, the urine-only state and the toilet paper state. Our original dataset contains 2,902 stool images spanning all 7 BSFS types and 245 other images used for the three other toilet state classifications, including clean toilets, toilets with urination only and toilets filled with toilet paper. These stool images were acquired through search engines such as Google, Bing and Yahoo (keywords included 'stool in toilet' and 'faeces'). Over the course of the toilet development, we collected an additional 12,226 stool images and relevant toilet status images from the research participants ( $n = 11$ ). As real stool images from research participants accumulate, the performance of our CNN will be considerably enhanced.

**Three-dimensional printing.** New parts required for the toilet assembly were designed using computer aided design (CAD) software, Rhinoceros 3D (Robert McNeel & Associates). The designed parts were then exported as the .stl file format, which is compatible with numerous 3D printers and 3D printing services. The parts were then printed using a Dremel 3D45 Printer (Dremel Digilab, Robert Bosch), Ultimaker 2 (Ultimaker) or fused deposition modelling at the Stanford Product Realization Laboratory, a multi-site teaching facility at Stanford University.

**Prototyping of printed circuit boards.** All of the electronic circuits were first tested on a breadboard. After validating the parts, research-grade PCBs were built by the Stanford System Prototyping Facility (SPF). Small electronic parts such as metal-oxide-semiconductor field-effect transistors, rectangular connectors (male pins, female sockets) and cable ribbons were acquired from Digi-Key. Two circuit boards were designed to control the urine module and defecation module. Initial prototype parts for the toilet system are listed and the circuit diagram of each module is provided in Supplementary Table 5 and Supplementary Fig. 9, respectively. Each module controls the proposed urination/defecation analysis process by controlling LED lighting, video recording, pressure sensor and a passive infrared motion sensor. These individual modules will be integrated.

**Cloud system.** Dropbox (a cloud file storage and syncing service) application program interface v.2 was used to establish an initial cloud system for storing non-patient health information. We used a third-party script that enables the upload, download, listing of or deletion of files from Dropbox. Acquired images, videos and biometric information from the toilet system are constantly synchronized with Dropbox using a Raspberry Pi. Similarly, for patient health information, Research Electronic Data Capture system (REDCap) and/or Stanford Medicine Box, which can be used to collect sensitive data (including 21 Code of Federal Regulation

Part 11, Federal Information Security Management Act, and HIPAA-compliant environments), were established. A flowchart of the cloud system is shown in the Supplementary Schematic.

Other parts are described in Supplementary Table 5.

**Human participants.** This study was approved by the Stanford IRB, under trial registration numbers 45621 and 51666 (Smart Toilet User Acceptance Survey) and by the Seoul Song Do Hospital IRB, under trial registration number 2018-008. The participants were recruited through flyer advertisements and e-mail lists. Once participants showed interest, a short introduction of the research study was provided, along with possible risks and benefits, participant's rights (responsibilities and withdrawal) and financial compensation. All of the participants signed the printed consent form after we addressed all of their concerns in person.

**Reporting Summary.** Further information on research design is available in the Nature Research Reporting Summary linked to this article.

## Data availability

Restrictions apply to the availability of the medical training and validation data, which were used with permission of the participants for the current study, and are therefore not publicly available. Some of the data may be available from the authors on reasonable request, after permission from the Stanford University School of Medicine and/or the Seoul Song Do Hospital.

## Code availability

The codes may be available from the authors on reasonable request, after permission from the Stanford University School of Medicine and/or Seoul Song Do Hospital.

Received: 7 December 2018; Accepted: 14 February 2020;

Published online: 06 April 2020

## References

- Porche, D. J. Precision medicine initiative. *Am. J. Mens Health* **9**, 177 (2015).
- Ashley, E. A. The precision medicine initiative: a new national effort. *JAMA* **313**, 2119–2120 (2015).
- Collins, F. S. & Varmus, H. A new initiative on precision medicine. *N. Engl. J. Med.* **372**, 793–795 (2015).
- What is precision medicine? *Genetics Home Reference* <https://ghr.nlm.nih.gov/primer/precisionmedicine/definition> (2020).
- Gambhir, S. S., Ge, T. J., Vermesh, O. & Spitzer, R. Toward achieving precision health. *Sci. Transl. Med.* **10**, ea03612 (2018).
- Blackwell, D. L., Lucas, J. W. & Clarke, T. C. Summary health statistics for U.S. adults: national health interview survey, 2012. *Vital Health Stat.* **10**, 1–161 (2014).
- Aalipour, A. et al. Deactivated CRISPR associated protein 9 for minor-allele enrichment in cell-free DNA. *Clin. Chem.* **64**, 307–316 (2018).
- Park, S.-m et al. Molecular profiling of single circulating tumor cells from lung cancer patients. *Proc. Natl Acad. Sci. USA* **113**, E8379–E8386 (2016).
- Krillaviciute, A. et al. Detection of cancer through exhaled breath: a systematic review. *Oncotarget* **6**, 38643–38657 (2015).
- Peng, G. et al. Detection of lung, breast, colorectal, and prostate cancers from exhaled breath using a single array of nanosensors. *Br. J. Cancer* **103**, 542–551 (2010).
- Hong, Y. J. et al. Multifunctional wearable system that integrates sweat-based sensing and vital-sign monitoring to estimate pre-/post-exercise glucose levels. *Adv. Funct. Mater.* **28**, 1805754 (2018).
- Bandodkar, A. J. et al. Battery-free, skin-interfaced microfluidic/electronic systems for simultaneous electrochemical, colorimetric, and volumetric analysis of sweat. *Sci. Adv.* **5**, eaav3294 (2019).
- Lee, J.-R., Choi, J., Shultz, T. O. & Wang, S. X. Small molecule detection in saliva facilitates portable tests of marijuana abuse. *Anal. Chem.* **88**, 7457–7461 (2016).
- Kim, J. et al. Non-invasive mouthguard biosensor for continuous salivary monitoring of metabolites. *Analyst* **139**, 1632–1636 (2014).
- Harpole, M., Davis, J. & Espina, V. Current state of the art for enhancing urine biomarker discovery. *Expert Rev. Proteom.* **13**, 609–626 (2016).
- Decramer, S. et al. Urine in clinical proteomics. *Mol. Cell. Proteom.* **7**, 1850–1862 (2008).
- Davies, R. J., Miller, R. & Coleman, N. Colorectal cancer screening: prospects for molecular stool analysis. *Nat. Rev. Cancer* **5**, 199–209 (2005).
- Gisbert, J. P., de la Morena, F. & Abaira, V. Accuracy of monoclonal stool antigen test for the diagnosis of *H. pylori* infection: a systematic review and meta-analysis. *Am. J. Gastroenterol.* **101**, 1921–1930 (2006).
- Warren, A. D., Kwong, G. A., Wood, D. K., Lin, K. Y. & Bhatia, S. N. Point-of-care diagnostics for noncommunicable diseases using synthetic urinary biomarkers and paper microfluidics. *Proc. Natl Acad. Sci. USA* **111**, 3671–3676 (2014).
- Lin, K. Y., Kwong, G. A., Warren, A. D., Wood, D. K. & Bhatia, S. N. Nanoparticles that sense thrombin activity as synthetic urinary biomarkers of thrombosis. *ACS Nano* **7**, 9001–9009 (2013).
- Graff, L. A *Handbook of Routine Urinalysis* (Lippincott, 1983).
- Simerville, J. A., Maxted, W. C. & Pahira, J. J. Urinalysis: a comprehensive review. *Am. Fam. Physician* **71**, 1153–1162 (2005).
- Schäfer, W. et al. Good urodynamic practices: uroflowmetry, filling cystometry, and pressure-flow studies. *NeuroUrol. Urodyn.* **21**, 261–274 (2002).
- Dabhoiwala, N., Osawa, D., Lim, A. T. L. & Abrams, P. The ICS-'BPH' study: uroflowmetry, lower urinary tract symptoms and bladder outlet obstruction. *Br. J. Urol.* **82**, 619–623 (1998).
- Jørgensen, J. B., Jensen, K. E., Bille-Brahe, N. & Mogensen, P. Uroflowmetry in asymptomatic elderly males. *BJU Int.* **58**, 390–395 (1986).
- El Din, K. E., Kiemeny, L., De Wildt, M., Debruyne, F. & de La Rosette, J. Correlation between uroflowmetry, prostate volume, postvoid residue, and lower urinary tract symptoms as measured by the International Prostate Symptom Score. *Urology* **48**, 393–397 (1996).
- Markland, A. D. et al. Association of low dietary intake of fiber and liquids with constipation: evidence from the National Health and Nutrition Examination Survey. *Am. J. Gastroenterol.* **108**, 796–803 (2013).
- Li, B. R. et al. Risk factors for steatorrhea in chronic pancreatitis: a cohort of 2,153 patients. *Sci. Rep.* **6**, 21381 (2016).
- Johnson, C. D. et al. Qualitative assessment of the symptoms and impact of pancreatic exocrine insufficiency (PEI) to inform the development of a patient-reported outcome (PRO) instrument. *Patient* **10**, 615–628 (2017).
- Parekh, D. & Natarajan, S. Surgical management of chronic pancreatitis. *Indian J. Surg.* **77**, 453–469 (2015).
- Shandro, B. M., Nagarajah, R. & Poullis, A. Challenges in the management of pancreatic exocrine insufficiency. *World J. Gastrointest. Pharm. Ther.* **9**, 39–46 (2018).
- de la Iglesia-García, D. et al. Efficacy of pancreatic enzyme replacement therapy in chronic pancreatitis: systematic review and meta-analysis. *Gut* **66**, 1354–1355 (2017).
- Park, H. H., Kim, H. Y., Jung, S. E., Lee, S. C. & Park, K. W. Long-term functional outcomes of PPPD in children—nutritional status, pancreatic function, GI function and QOL. *J. Pediatr. Surg.* **51**, 398–402 (2016).
- D'haens, G. et al. Fecal calprotectin is a surrogate marker for endoscopic lesions in inflammatory bowel disease. *Inflamm. Bowel Dis.* **18**, 2218–2224 (2012).
- Van Rheenen, P. F., Van de Vijver, E. & Fidler, V. Faecal calprotectin for screening of patients with suspected inflammatory bowel disease: diagnostic meta-analysis. *Brit. Med. J.* **341**, c3369 (2010).
- Schoepfer, A. M. et al. Fecal calprotectin correlates more closely with the Simple Endoscopic Score for Crohn's disease (SES-CD) than CRP, blood leukocytes, and the CDAL. *Am. J. Gastroenterol.* **105**, 162–169 (2010).
- Imperiale, T. F. et al. Multitarget stool DNA testing for colorectal-cancer screening. *N. Engl. J. Med.* **370**, 1287–1297 (2014).
- Ahlquist, D. A. et al. Next-generation stool DNA test accurately detects colorectal cancer and large adenomas. *Gastroenterology* **142**, 248–256 (2012).
- Lane, M. M., Czyzewski, D. I., Chumpitazi, B. P. & Shulman, R. J. Reliability and validity of a modified Bristol Stool Form Scale for children. *J. Pediatr.* **159**, 437–441 (2011).
- Candy, D. & Edwards, D. The management of chronic constipation. *Curr. Paediatr.* **13**, 101–106 (2003).
- Halmos, E. P. et al. Inaccuracy of patient-reported descriptions of and satisfaction with bowel actions in irritable bowel syndrome. *Neurogastroenterol. Motil.* **30**, e13187 (2018).
- Mínguez, P. M. & Benages, M. A. The Bristol scale—a useful system to assess stool form? *Rev. Esp. Enferm. Dig.* **101**, 305–311 (2009).
- Ikenaga, T., Shigematsu, T., Kusumoto, A., Yamamoto, K. & Yada, M. Toilet device with health examination system. US patent US4961431A (1990).
- Ikenaga, T., Shigematsu, T., Yada, M., Makita, S. & Kitaura, H. Toilet with urine constituent measuring device. US patent US4962550A (1990).
- Nakayama, C. et al. Toilet-bowl-mounted urinalysis unit. US patent US5730149A (1998).
- Voswinckel, P. A marvel of colors and ingredients. The story of urine test strip. *Kidney Int. Suppl.* **47**, S3–S7 (1994).
- Yang, P. J., Pham, J., Choo, J. & Hu, D. L. Duration of urination does not change with body size. *Proc. Natl Acad. Sci. USA* **111**, 11932–11937 (2014).
- Haylen, B. T., Ashby, D., Sutherst, J. R., Frazer, M. I. & West, C. R. Maximum and average urine flow rates in normal male and female populations—the Liverpool nomograms. *Br. J. Urol.* **64**, 30–38 (1989).
- Kim, J. H. et al. Terminal dribbling in male patients with lower urinary tract symptoms: relationship with international prostate symptom score and with intravesical prostatic protrusion. *BMC Urol.* **15**, 89 (2015).
- Jurman, G., Riccadonna, S. & Furlanello, C. A comparison of MCC and CEN error measures in multi-class prediction. *PLoS ONE* **7**, e41882 (2012).

51. Gorodkin, J. Comparing two  $K$ -category assignments by a  $K$ -category correlation coefficient. *Comput. Biol. Chem.* **28**, 367–374 (2004).
52. Wei, J.-M., Yuan, X.-J., Hu, Q.-H. & Wang, S.-Q. A novel measure for evaluating classifiers. *Expert Syst. Appl.* **37**, 3799–3809 (2010).
53. Blake, M., Raker, J. & Whelan, K. Validity and reliability of the Bristol stool form scale in healthy adults and patients with diarrhoea-predominant irritable bowel syndrome. *Aliment. Pharmacol. Ther.* **44**, 693–703 (2016).
54. Krishnasamy, P., Belongie, S. & Kriegman, D. Wet fingerprint recognition: challenges and opportunities. In *Proc. 2011 International Joint Conference on Biometrics* 1–7 (IEEE, 2011).
55. Gonzalez, R. C. & Woods, R. E. *Digital Image Processing* (Addison-Wesley, 1992).
56. Wang, Z., Bovik, A. C., Sheikh, H. R. & Simoncelli, E. P. Image quality assessment: from error visibility to structural similarity. *IEEE Trans. Image Process.* **13**, 600–612 (2004).
57. Lewis, S. J. & Heaton, K. W. Stool form scale as a useful guide to intestinal transit time. *Scand. J. Gastroenterol.* **32**, 920–924 (1997).
58. Esteve, A. et al. Dermatologist-level classification of skin cancer with deep neural networks. *Nature* **542**, 115–118 (2017).
59. von Münch, E. & Milosevic, D. *Qualitative Survey on Squatting Toilets and Anal Cleansing with Water with a Special Emphasis on Muslim and Buddhist Countries by Using the SuSanA Discussion Forum* (Ostella Consulting, 2015).
60. Krhut, J. et al. Comparison between uroflowmetry and sonouroflowmetry in recording of urinary flow in healthy men. *Int J. Urol.* **22**, 761–765 (2015).
61. Yang, P. J., LaMarca, M., Kaminski, C., Chu, D. I. & Hu, D. L. Hydrodynamics of defecation. *Soft Matter* **13**, 4960–4970 (2017).
62. Van Rossum, L. G. et al. Random comparison of guaiac and immunochemical fecal occult blood tests for colorectal cancer in a screening population. *Gastroenterology* **135**, 82–90 (2008).
63. Morikawa, T. et al. A comparison of the immunochemical fecal occult blood test and total colonoscopy in the asymptomatic population. *Gastroenterology* **129**, 422–428 (2005).
64. Guittet, L. et al. Comparison of a guaiac based and an immunochemical faecal occult blood test in screening for colorectal cancer in a general average risk population. *Gut* **56**, 210–214 (2007).
65. Raman, M. et al. Fecal microbiome and volatile organic compound metabolome in obese humans with nonalcoholic fatty liver disease. *Clin. Gastroenterol. Hepatol.* **11**, 868–875 (2013).
66. Damman, C. J., Miller, S. I., Surawicz, C. M. & Zisman, T. L. The microbiome and inflammatory bowel disease: is there a therapeutic role for fecal microbiota transplantation? *Am. J. Gastroenterol.* **107**, 1452–1459 (2012).
67. Ley, R. E. Obesity and the human microbiome. *Curr. Opin. Gastroenterol.* **26**, 5–11 (2010).
68. Chang, J. Y. et al. Decreased diversity of the fecal microbiome in recurrent *Clostridium difficile*—associated diarrhea. *J. Infect. Dis.* **197**, 435–438 (2008).
69. Krizhevsky, A., Sutskever, I. & Hinton, G. E. ImageNet classification with deep convolutional neural networks. In *Proc. 25th International Conference on Neural Information Processing Systems — Volume 1* 1097–1105 (Curran Associates, 2012).
70. Abadi, M. et al. Tensorflow: a system for large-scale machine learning. In *Proc. 12th USENIX Symposium on Operating Systems Design and Implementation* 265–283 (USENIX, 2016).

## Acknowledgements

We thank N. Baneai for insight and discussion regarding stool analysis; K. J. Chung for discussion on uroflowmetry implementation; P. Yock for discussion on overall project guidance and on managing intellectual property; C. Kim and I. Steinberg for helpful guidance on image reconstruction; C. T. Chan for the scientific proofreading of the manuscript; D. Chon (Albany High School, CA, USA) for her contribution to 3D CAD designs, and the real-time image analysis for the urinalysis module; the Stanford Clinical Laboratory for over-viewing their urinalysis equipment; and staff at the Stanford Product Realization Laboratory, SPF, Stanford Byers Center for Biodesign, Stanford Urology Clinic and S. Taheri for their services. D.E. and S.-m.P. acknowledge the support of the Stanford Institutes of Medicine Summer Research Program. This work was supported in part by the Canary Foundation (to S.S.G.) and in part by NIH/NCI Training Grant T32 CA118681. The REDCap platform services are made possible by Stanford School of Medicine Research Office. The REDCap platform services at Stanford are subsidized by the National Center for Research Resources and the National Center for Advancing Translational Sciences, National Institutes of Health, through grant UL1 TR001085. The data content is solely the responsibility of the authors and does not necessarily represent the official views of the NIH.

## Author contributions

S.S.G. conceived the original idea of the toilet system. S.-m.P. and S.S.G. strategically prioritized various clinical applications. S.-m.P., D.D.W., B.J.L., D.E. and S.S.G. contributed to overall study design, product prototyping and data analysis. A.E. and A.X.L. contributed to the development of machine learning algorithm used in the toilet. B.J.L., J.K., T.J.G., S.B. and F.B.A. contributed to uroflowmetry module design and its execution. D.D.W., A.A., J.H.K., S.S., E.H.C., H.P., Y.C., W.J.K. and J.K.L. contributed to stool analysis. D.E., J.H.Y. and A.M.B. contributed to urinalysis study design and module implementation. C.Y. and S.X.W. contributed to electronic circuit design, system automation, and overall modular development and integration of the system. S.-m.P., D.D.W., B.J.L., R.S. and S.S.G. analysed all of the data and wrote the paper.

## Competing interests

S.-m.P., D.D.W., B.J.L., S.B., D.E. and S.S.G. are co-inventors of a patent application filed by Stanford University on the subject of this work (US patent application number 62/695326). S.S.G. is a consultant or receives funding from several companies that work in the healthcare space although none of these companies are directly involved in the current work.

## Additional information

**Supplementary information** is available for this paper at <https://doi.org/10.1038/s41551-020-0534-9>.

**Correspondence and requests for materials** should be addressed to S.S.G.

**Reprints and permissions information** is available at [www.nature.com/reprints](http://www.nature.com/reprints).

**Publisher's note** Springer Nature remains neutral with regard to jurisdictional claims in published maps and institutional affiliations.

© The Author(s), under exclusive licence to Springer Nature Limited 2020

## Reporting Summary

Nature Research wishes to improve the reproducibility of the work that we publish. This form provides structure for consistency and transparency in reporting. For further information on Nature Research policies, see [Authors & Referees](#) and the [Editorial Policy Checklist](#).

### Statistics

For all statistical analyses, confirm that the following items are present in the figure legend, table legend, main text, or Methods section.

- | n/a                                 | Confirmed   |
|-------------------------------------|---|
| <input type="checkbox"/>            | <input checked="" type="checkbox"/> The exact sample size ( $n$ ) for each experimental group/condition, given as a discrete number and unit of measurement   |
| <input type="checkbox"/>            | <input checked="" type="checkbox"/> A statement on whether measurements were taken from distinct samples or whether the same sample was measured repeatedly   |
| <input type="checkbox"/>            | <input checked="" type="checkbox"/> The statistical test(s) used AND whether they are one- or two-sided<br><i>Only common tests should be described solely by name; describe more complex techniques in the Methods section.</i>  |
| <input checked="" type="checkbox"/> | <input type="checkbox"/> A description of all covariates tested   |
| <input checked="" type="checkbox"/> | <input type="checkbox"/> A description of any assumptions or corrections, such as tests of normality and adjustment for multiple comparisons  |
| <input checked="" type="checkbox"/> | <input type="checkbox"/> A full description of the statistical parameters including central tendency (e.g. means) or other basic estimates (e.g. regression coefficient) AND variation (e.g. standard deviation) or associated estimates of uncertainty (e.g. confidence intervals) |
| <input type="checkbox"/>            | <input checked="" type="checkbox"/> For null hypothesis testing, the test statistic (e.g. $F$ , $t$ , $r$ ) with confidence intervals, effect sizes, degrees of freedom and $P$ value noted<br><i>Give <math>P</math> values as exact values whenever suitable.</i>                 |
| <input checked="" type="checkbox"/> | <input type="checkbox"/> For Bayesian analysis, information on the choice of priors and Markov chain Monte Carlo settings   |
| <input checked="" type="checkbox"/> | <input type="checkbox"/> For hierarchical and complex designs, identification of the appropriate level for tests and full reporting of outcomes   |
| <input checked="" type="checkbox"/> | <input type="checkbox"/> Estimates of effect sizes (e.g. Cohen's $d$ , Pearson's $r$ ), indicating how they were calculated   |

*Our web collection on [statistics for biologists](#) contains articles on many of the points above.*

### Software and code

Policy information about [availability of computer code](#)

Data collection

Python 3.6 & 3.7, Origin Lab Pro (2019), Microsoft Excel (2016), Open CV (template matching), Tensorflow for poets 2

Data analysis

OriginLab Pro (2019): Statistics — Hypothesis testing — Two sample t-testing

For manuscripts utilizing custom algorithms or software that are central to the research but not yet described in published literature, software must be made available to editors/reviewers. We strongly encourage code deposition in a community repository (e.g. GitHub). See the Nature Research [guidelines for submitting code & software](#) for further information.

### Data

Policy information about [availability of data](#)

All manuscripts must include a [data availability statement](#). This statement should provide the following information, where applicable:

- Accession codes, unique identifiers, or web links for publicly available datasets
- A list of figures that have associated raw data
- A description of any restrictions on data availability

Restrictions apply to the availability of the medical training and validation data, which were used with permission for the current study by the participants, and thus are not publicly available. Some of the data may be available from the authors on reasonable request, after permission from the Stanford University School of Medicine and/or the Seoul Song Do Hospital.

## Field-specific reporting

Please select the one below that is the best fit for your research. If you are not sure, read the appropriate sections before making your selection.

Life sciences  Behavioural & social sciences  Ecological, evolutionary & environmental sciences

For a reference copy of the document with all sections, see [nature.com/documents/nr-reporting-summary-flat.pdf](https://www.nature.com/documents/nr-reporting-summary-flat.pdf)

## Life sciences study design

All studies must disclose on these points even when the disclosure is negative.

Sample size	Smart-toilet uroflowmetry monitoring for 10 adults, for technical validation. Smart-toilet defecation monitoring for 11 adults, for technical validation. Smart-toilet user-acceptance survey distributed over the Stanford research community (300 responses). Sample sizes were determined by the availability of funding for compensation.
Data exclusions	None.
Replication	No replication was made.
Randomization	Not applicable.
Blinding	The surgeons who graded BSFS on stool generated by the participants were blinded from the results of the CNNs. Two participants who agreed to grade BSFS on their own stool were blinded from the results of the surgeons and of the CNNs.

## Reporting for specific materials, systems and methods

We require information from authors about some types of materials, experimental systems and methods used in many studies. Here, indicate whether each material, system or method listed is relevant to your study. If you are not sure if a list item applies to your research, read the appropriate section before selecting a response.

### Materials & experimental systems

n/a	Included in the study
<input checked="" type="checkbox"/>	<input type="checkbox"/> Antibodies
<input checked="" type="checkbox"/>	<input type="checkbox"/> Eukaryotic cell lines
<input checked="" type="checkbox"/>	<input type="checkbox"/> Palaeontology
<input checked="" type="checkbox"/>	<input type="checkbox"/> Animals and other organisms
<input type="checkbox"/>	<input checked="" type="checkbox"/> Human research participants
<input checked="" type="checkbox"/>	<input type="checkbox"/> Clinical data

### Methods

n/a	Included in the study
<input checked="" type="checkbox"/>	<input type="checkbox"/> ChIP-seq
<input checked="" type="checkbox"/>	<input type="checkbox"/> Flow cytometry
<input checked="" type="checkbox"/>	<input type="checkbox"/> MRI-based neuroimaging

## Human research participants

Policy information about [studies involving human research participants](#)

Population characteristics	Eleven participants (5 females and 6 males, ages ranging from 19 to 41). Age (only adults were included in the study) was the only inclusion criteria.
Recruitment	Participants had primarily been recruited from posted flyer advertisements, which included a QR code to direct the participants to our RedCap portal ( <a href="https://redcap.stanford.edu/surveys/?s=HMJE9DAHKD">https://redcap.stanford.edu/surveys/?s=HMJE9DAHKD</a> ), in which they could understand the system and experimental steps in detail, and send their contact number and/or email to our team to request participation in the study. We also used existing e-mail lists (including, but not limited to, the Molecular Imaging Program at Stanford e-mail list, the Department of Radiology e-mail list, and the Precision Health INtegrated Diagnostics Center [PHIND] email list) at Stanford University.  Once participants decided to participate in the experiments, a short introduction was given to them with a printed consent form. The consent form included the brief introduction of the research study (purpose, duration and procedures), possible risks and benefits, participant's rights (responsibilities and withdrawal), and financial compensation. The participants signed the consent form after reading the items thoroughly.
Ethics oversight	The study was approved by the Stanford IRB, under trial registration numbers 45621 and 51666 (Smart Toilet User Acceptance Survey) and by the Seoul Song Do Hospital IRB, under trial registration number 2018-008.

Note that full information on the approval of the study protocol must also be provided in the manuscript.